

LEADING THE WORLD IN COLOR INNOVATION

Kmⁱ

www.kmink.com



INK
CRAFTSMANSHIP
WITH A "SOUL"

KWANG MYUNG INK Co.,Ltd.

Printed / Nov. 2018

Kmⁱ
Quality is Ability



ABOUT KMI

YEAR

1976

Kwang Myung Ink Co., Ltd (KMI) was established in 1976 as a specialist manufacturer of offset inks, with a product range consisting of coldset, sheetfed and heatset ink.

COUNTRIES

60

KMI is a global ink company exporting its products to more than 60 countries.

COMPANIES

250+

KMI supplies ink to more than 250 customers in South Korea and many more around the world, including newspapers, publishing companies, printing houses and specialist print consumables dealers.

%

60

About 60% of KMI's total sales come from overseas.

TONS

35,000

KMI has an annual production capacity of 35,000 tons, making it one of the largest producers among Asian ink companies.

HISTORY

Run to the Future

- 2017.01 Designated Global Small Giant Company of Korea
- 2015.01 Won the awards for industry part of Tong Myung Grand Prix
- 2014.09 Won the awards for Iron Medal of Industrial Effort
- 2012.07 Acquired ECO Mark of Japan
- 2011.11 Awarded '30 million Dollar Export Tower'
- 2011.05 Certified ISO2846 (International Color Standard) by Printing Industries of America

Remarkable Activities

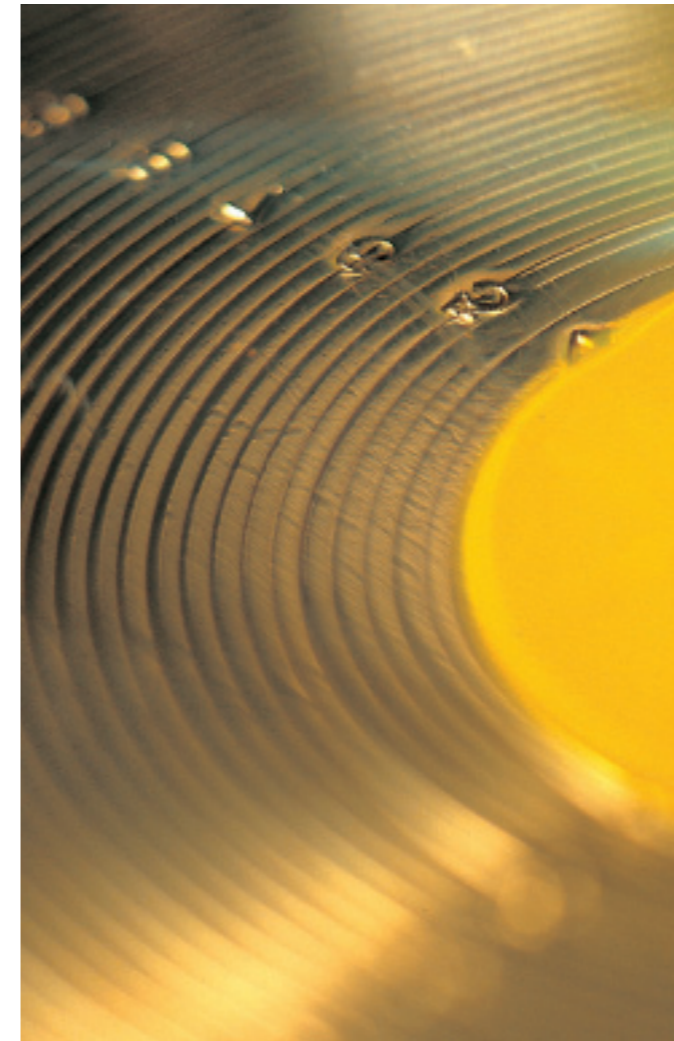
- 2008.11 Awarded '20 million Dollar Export Tower'
- 2007.06 Appointed as a promising export company
- 2006.12 Selected as 'Technology Innovative Medium Enterprise (INNOBIZ)' by Korean Government
- 2006.09 Accredited ISO 9001 certified for QMS ISO 14001 certified for EMS
- 2005.11 Awarded '10 million Dollar Export Tower'

Development time

- 2003.03 Won 'Order of Industrial Service Merit' for the day of Taxpayers
- 2002.12 Won Technology Grand Prix at the 'Busan Industrial Grand Awards'
- 2002.11 Awarded '5 million Dollar Export Tower' by the Korean Government
- 2002.06 Moved to fully automated new factory in Noksan, Busan Installed bead-mill machines(K240 & K120) built by Swiss company "Buhler"
- 1996.01 Developed soybean oil ink for the first time in Korea and acquired "Soy Ink Mark"

Since 1976 Foundation

- 1980.04 Resin factory was built
- 1979.10 Second factory was built in Saha Janglim
- 1978.08 Relocated to a new factory in Saha Janglim
- 1977.02 Busan Sales office opened
- 1976.09 Kwang Myung Ink manufacturing company was founded and began producing offset ink





I like to be known as an Ink Engineer, not a CEO and I hope to remain a craftsman of ink in the future.

I am confident that my philosophy of “quality”, as an ink technician who wants to make a product with “craftsmanship” has led the history of Kwang Myung ink for more than 40 years.

I am pleased to share this with customers in more than 60 countries around the world.

Kwang Myung Ink’s history is not the oldest, but it is a story of dynamic and phenomenal growth.

Now the young, creative members of Kwang Myung Ink and I are preparing a new 100 years of history.

I would now like to write another chapter of success with our customers.

Lee Nam Kyu
Chairman, Kwang Myung Ink



CEO Message

Management Philosophy



Craftsmanship for Quality and Technology

The craftsmanship of Kwang Myung Ink creates the highest quality products with ‘Soul’, creates quality service, and innovates colour and technology.

Long-term partnerships

Our long-term partnership with customers and partners is our business philosophy which is our most important value.



Eco-friendly management practice and safety first

We constantly develop and produce environmentally friendly products and implement eco-friendly management through production processes that efficiently use resources and energy.

In addition, we constantly conduct internal monitoring to comply with safety and health related laws, international standards and conventions.



**QUALITY
ABOVE ALL**

Quality is Ability

Quality is our first and main priority.

Maintaining the highest quality is the core value of Kwang Myung Ink.

We produce world class products with technology and science, based on our craftsmanship.



Consistency makes Quality

60% OF SALES TURNOVER IS ACHIEVED OVERSEAS



Global Ink Manufacturer,



THE OPTIMAL INK FOR ANY CLIMATE

Kwang Myung Ink exports high-quality inks to more than 60 countries around the world, including the United States, Japan, Europe, Australia, Russia, China, the Middle East and Africa.

From Dubai, the Middle East, where mid-summer temperatures exceed +40°C, to the Siberian region, where temperatures fall below -40°C in winter, and with accumulated data from over 60 countries worldwide, Kwang Myung Ink provides the most optimised ink anywhere in the world.





**THE FUTURE
IS GREEN**

Going Green

- Our goal is to generate absolutely no waste in our processes
- We are achieving a true energy saving process in manufacturing our products
- Environmental consciousness is a key component of KMI's management philosophy

Eco-friendly Products

- Soy oil Ink
- VOC Free Ink
- Waterless Ink
- Powderless Ink



CONTINUOUS R&D IS OUR CORE STRENGTH

KMI's R&D Centre

- Employs high level research scientists with Master's or Doctor's Degrees
- 1,000 square meters of modern equipped space
- 50 devices for analysis and research
- Global research networks in collaboration with international research centres in Japan, Europe and Australia

R&D Achievements

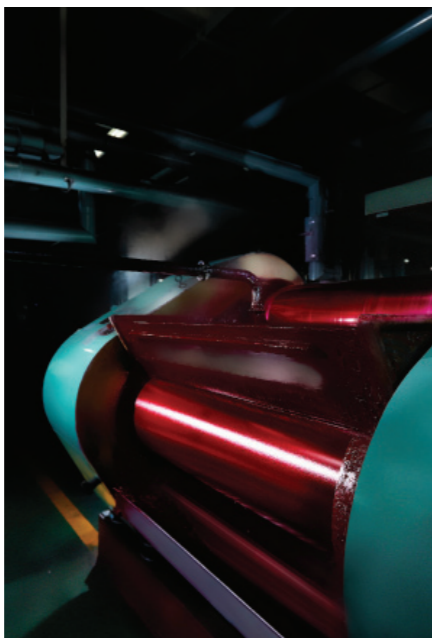
- Developed High molecular weight and High solubility Hard Resin for ink
- Developed Soybean oil ink series (Sheetfed ink, Newspaper ink and Heatset ink)
- Developed LOW VOC Ink
- Developed Eco-friendly Waterless Sheetfed and Web printing ink
- Developed Waterless News ink for KBA Cortina
- Developed UV ink (UV waterless and UV Coldset)
- Developed Electro conductive ink
- Developed Integrated Ink manufacturing process design
- Developed Vertical Drop ink manufacturing process design
- Developed Environment-friendly odourless ink
- Developed Non-Spray Powder Ink



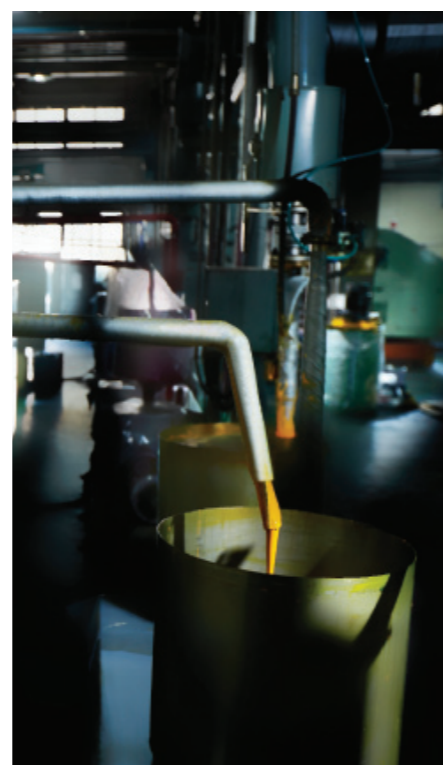
Kwang Myung ink produces its own 'hard resin' which is the key raw material of ink manufacture.

Hard resins are a key source of raw material that determines more than 80 percent of ink properties.

Nevertheless, many of the world's largest ink manufacturers are purchasing hard resins from outside. Companies who have their own hard resin formulations and production technologies are extremely limited.



Kwang Myung Ink uses its own hard resin formulating technology to control the ink quality from A to Z, and the production costs are reduced through the use of self-made hard resin, thus providing more benefits to our customers.



ONE-STOP PRODUCTION HARD RESIN- VARNISH-INK



VERTICAL DROP 'CASCADE' PRODUCTION



'Cascade' means 'waterfall' in English and the 'cascade method' is one of the original and differentiated ink production methods of Kwang Myung Ink. Unlike the horizontal movement of most ink manufacturers' production processes, the production process of Kwang Myung ink is designed as a vertical drop method as it leads from a large waterfall to a small waterfall.

The gravity-based 'Cascade' process minimises electricity usage in the production process, simplifies lead-times between processes and ensures 'Consistent Quality' by minimising batch deviations in subsequent processes.



PRODUCTION PROCESS



01 Hard Resin/Varnish Process

The 'Hard Resin' is the main ink raw material composed of natural rosin. Kwang Myung Ink makes ink and varnish with 100% self-produced hard resin. Having its own hard resin technology, Kwang Myung Ink manufactures 10 different hard resins by condensation reaction. As these various hard resins have their own characteristics, two or three hard resins need to be mixed together in ink and varnish production; which can maximise the advantages of each hard resin.

Dispersion process

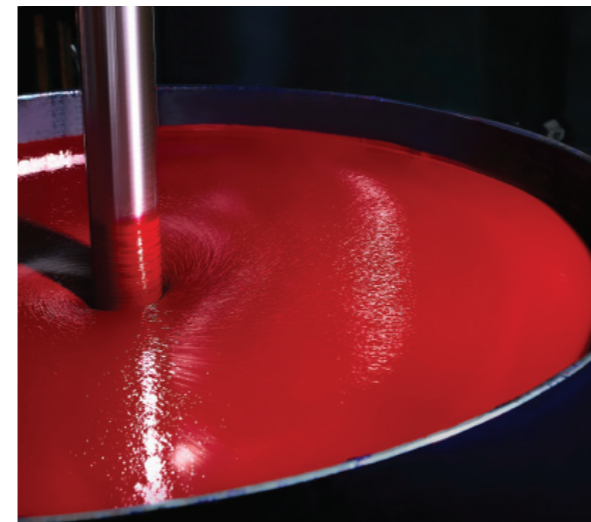
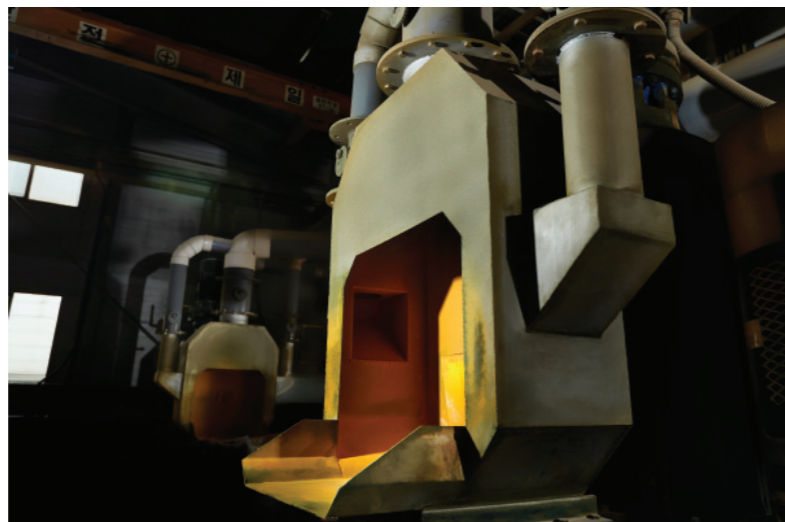
It is the 'dispersion process' that crushes up pigment finely to be perfectly melted into liquid varnish. The dispersion process is one of the most critical processes determining the quality of ink. Smaller particle size of pigment in inks guarantees better ink transfer on printing rollers on press and ultimately on the printed materials. Kwang Myung Ink operates a fully automatic dispersion process round the clock, equipped with state of the art automatic bead mills such as K-240, K-120 and Cobra-mill from Buehler Switzerland.

03



02 Blending/Aging process

The powder that puts colour into ink is called 'pigment'. It is the 'blending process' that mixes and melts pigment into liquid varnish. Completely mix together solid pigment and liquid varnish, the mixture needs to go through 'aging process' in a heated tank for 24 hours.



04 Adjustment process

It is the 'adjustment process' that modifies the mass-produced base inks in accordance with each customer's specifications (Tack, Viscosity, Flow, Drying time, etc.) by adding various additives. A huge database has been built in Manufacturing Execution Systems(MES) on specifications and requirements, by customer, item, country and season; which automatically controls the adjustment process.



Headquarters / Factory

LOCATION

Headquarters / Factory

Address 6, Noksansandan 165-ro, Gangseo-gu, Busan, Republic of Korea

Tel +82-51-831-9800

Fax +82-31-831-6608

Seoul / Logistic Centre

Address 203-14, Janghang-ro, Ilsandong-gu, Goyang-si, Gyeonggi-do,
Republic of Korea

Tel +82-31-908-0660

Fax +82-31-908-0661



Seoul / Logistic Centre